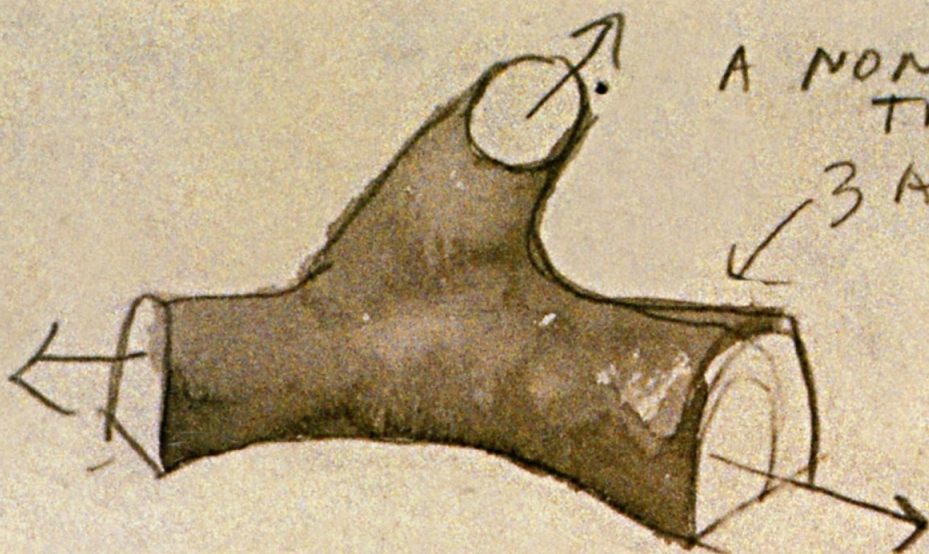


ARCHITECTURAL RECORD

08 2001

\$7.00 A PUBLICATION OF THE MCGRAW-HILL COMPANIES www.architecturalrecord.com



A NON-DIALECTIC
TREE:

3 Axis WSP
space

Analogous to:

Three Part Invention
Steven Holl takes "Tripleness"
to the suburbs with his
Bellevue Art Museum

direction of
magnetic field

direction
of magnetic force

direction of
moving charge
⊖

RIGHT HAND RULE = gives
the direction of movement of a
negatively charged particle
(electron) in a magnetic field

also in this issue
**Landscape Urbanism:
Not a Contradiction**

Special Section: LIGHTING

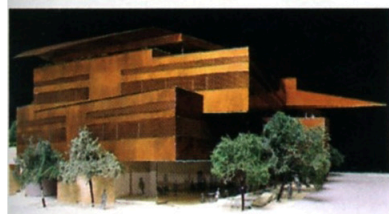
\$7.00 U.S.

08



News Briefs

Austin City Hall by Predock moves forward Design has been approved for the \$38 million Austin City Hall by Antoine Predock Architect of Albuquerque in association with Cotera, Kolar, Negrete & Reed Architects of Austin, Tex. The masses of the 118,000-square-foot building, to be completed in fall

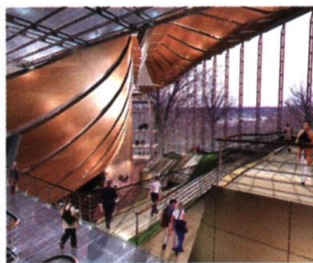


Austin City Hall, to open in 2003, will include a scrimlike bronze skin.

2003, are intentionally angled away from adjacent streets with several small plazas around the perimeter. Primary materials are limestone, bronze, and glass, with a scrimlike bronze skin enveloping the upper levels. According to Predock's design, terraces will be positioned to form analogous relationships to geological forces in the hill country surrounding Austin. Inside, catwalk-like bridges will intersect a four-story lobby with a bronze ceiling.

L.A. City Hall reopens after renovation and retrofit

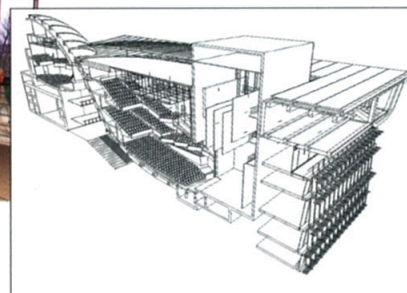
Los Angeles City Hall formally reopened in early July after a \$300 million renovation and seismic retrofit. The building, built in 1928, suffered serious damage in the 1994 Northridge earthquake and is now able to survive a 6.8-



magnitude quake. In the retrofit, 526 isolators or sliders and 70 viscous dampers were installed. The Los Angeles firm AC Martin Partners was the architecture and engineering principal for the seismic project. Levin and Associates Architects and Kaplan Chen Kaplan Architects and Planners worked on the historic renovation, which restored major interior spaces.

Grimshaw wins competition for Rensselaer art and media center London-based Nicholas Grimshaw & Partners has won a competition for a \$50 million electronic media and performing arts center at Rensselaer Polytechnic

Grimshaw's Rensselaer center includes atrium and performance spaces.



Institute in Troy, N.Y. The 160,000-square-foot building, to open in fall 2003, will have five performance venues, including a 1,200-seat theater, a 400-seat recital hall, galleries for electronic and traditional visual arts, and studios. Grimshaw was selected in a competition with Davis Brody Bond, Thomas Leeser, Morphosis Architects, and Bernard Tschumi Architects. Built on a bluff, the building will feature a glass atrium overlooking the Hudson River. Grimshaw envisions the building as a "floating wafer" that extends the Rensselaer campus westward.

the Aficio® name keeps getting bigger and bigger.

rmat



Introducing the Aficio 470W. The first wide format system to carry the prestigious Aficio name – with the proven reliability, print quality and performance the industry has come to expect from Ricoh's Aficio line. The Aficio 470W is a powerful stand-alone or connected digital solution. 600 dpi image quality. User-friendly touch screen controls. Stamping and overlay features. Contact us for a **DEPENDABLE DIGITAL™** wide format demo.

We're in your corner.

RICOH®
Image Communication
CIRCLE 21 ON INQUIRY CARD