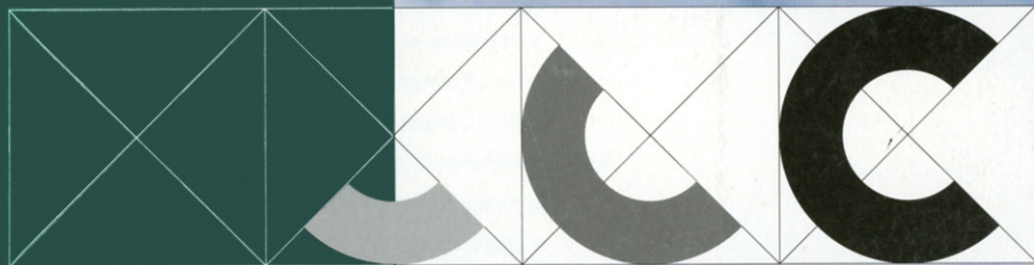


Volume 3
Spring 1993



COMPETITIONS

James Stirling: A Final Word

Whitehall Ferry Competition

A New Focus For Hermann Park

Architecture
Art
Planning

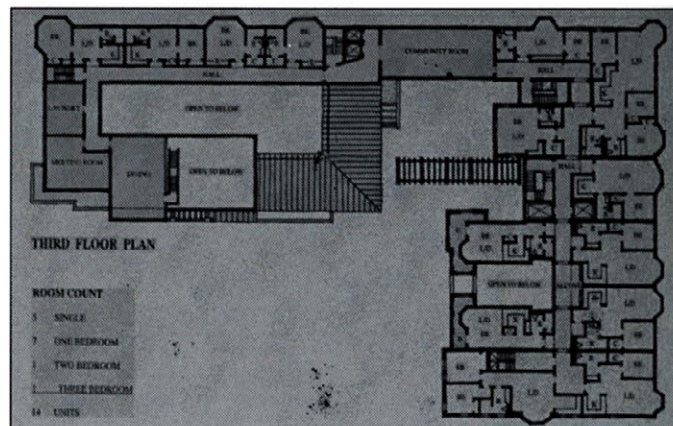


Raising the Roof, Opening Doors Better Environments for People with AIDS

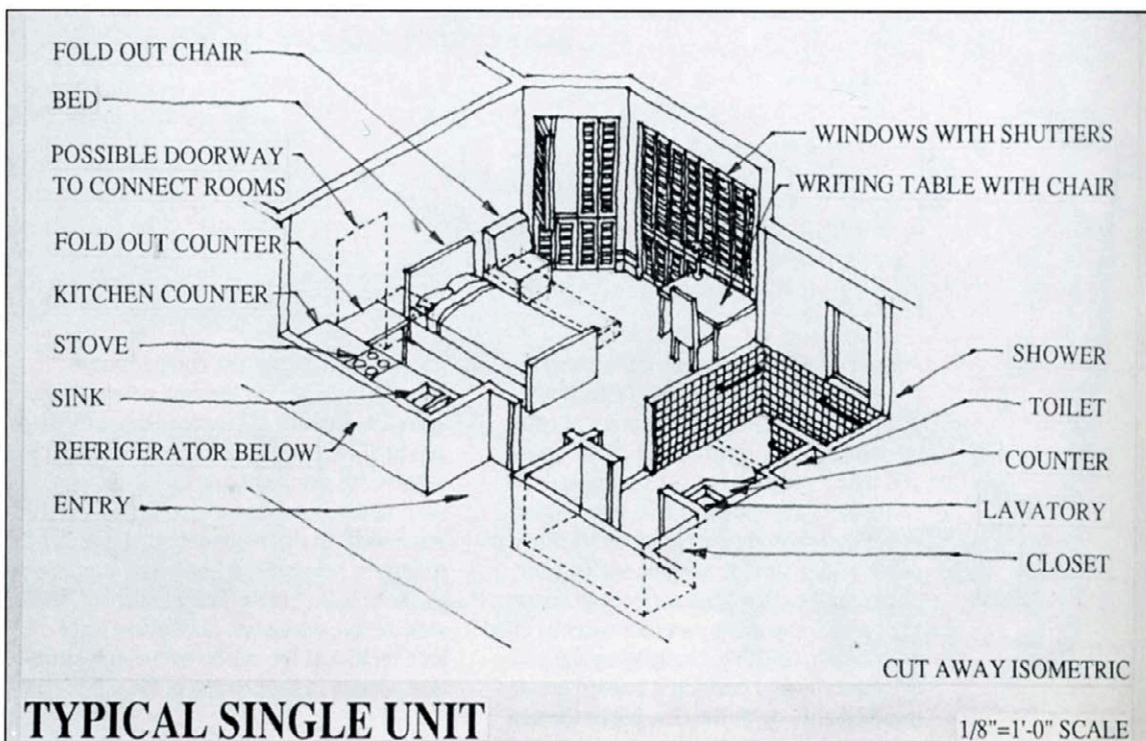
By Timothy Smith

Appropriate housing for people living with AIDS is needed now and will increase in urgency in the coming years. Projections of need based on the rate of HIV/AIDS occurrence support the reality of inadequacies of housing which meets the individual and collective challenges faced by people living with AIDS (PLWAs). These inadequacies are both quantitative in terms of availability, and qualitative with regard to design issues. Since most families and individuals living with AIDS require assisted supportive housing at some point in their illness, information which properly guides the design of housing for people with AIDS is crucial to ensuring that PLWAs have environments which support and emphasize living.

In concert with medical research that is currently underway and in step with the efforts of AIDS housing service providers nationwide, "Raising the Roof, Opening Doors" was a call for the best ideas for living environments for PLWAs. Due to the scarcity of available design research on solutions for this special needs housing, the City of



"They handled parking in a nice way. Lifted up the green area and lifted it up high enough so that there might be more chance to get some sun in there. It was the only one that got the plaza up there...attractive scale...It really conveys to the public that it's a building that says, 'I care,' which means small pieces, broken down, not a monolith. I felt that it's the best image, not just image as it looks, but image that presents itself in plan. Negative part of it is that it's all north light and it has a hallway with the windows..."
(Donald McDonald)



First Place
Kaplan/Nakaktani
 Architecture and
 Planning
 Santa Monica, CA
 Design Team
George Nakatani
David Kaplan
Lalida Pinsuvana
Hong Chen
 Consultant
Alice Nakatani, RN

Exterior of support-
 ive AIDS Housing
 site (right)
 Typical floor plan
 (opposite, below)
 Unit scheme
 (opposite, above)

