

RAISING THE ROOF OPENING DOORS

Living Environments for People with AIDS

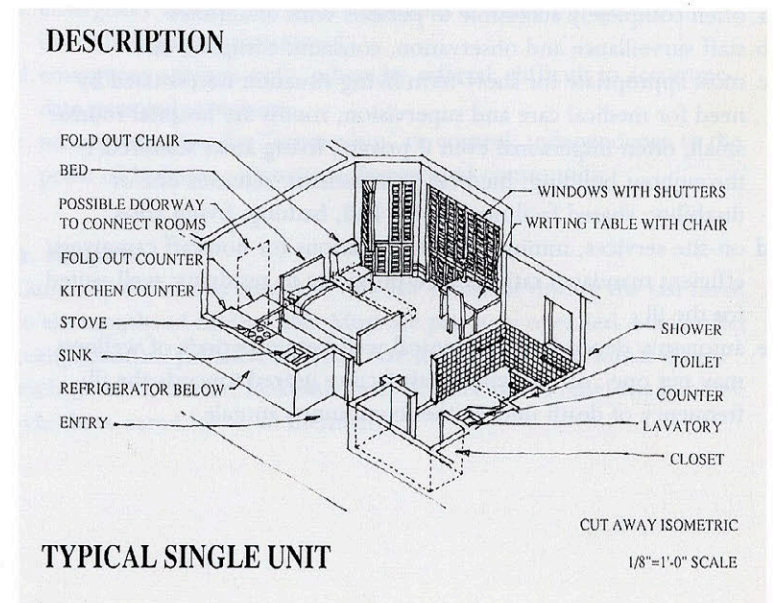
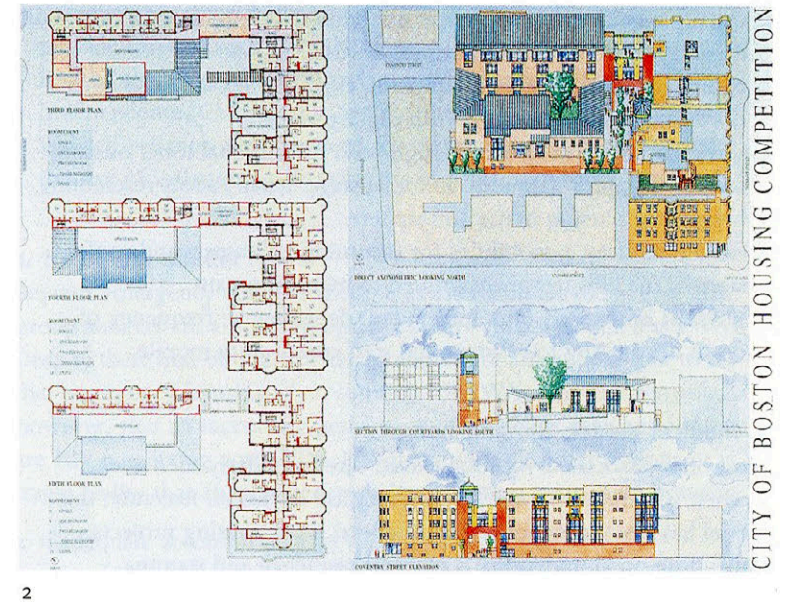
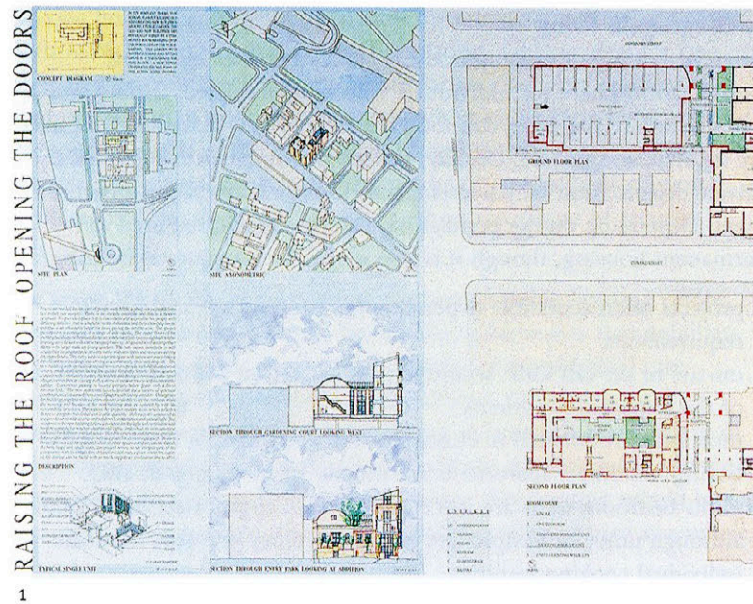
CONCLUSION

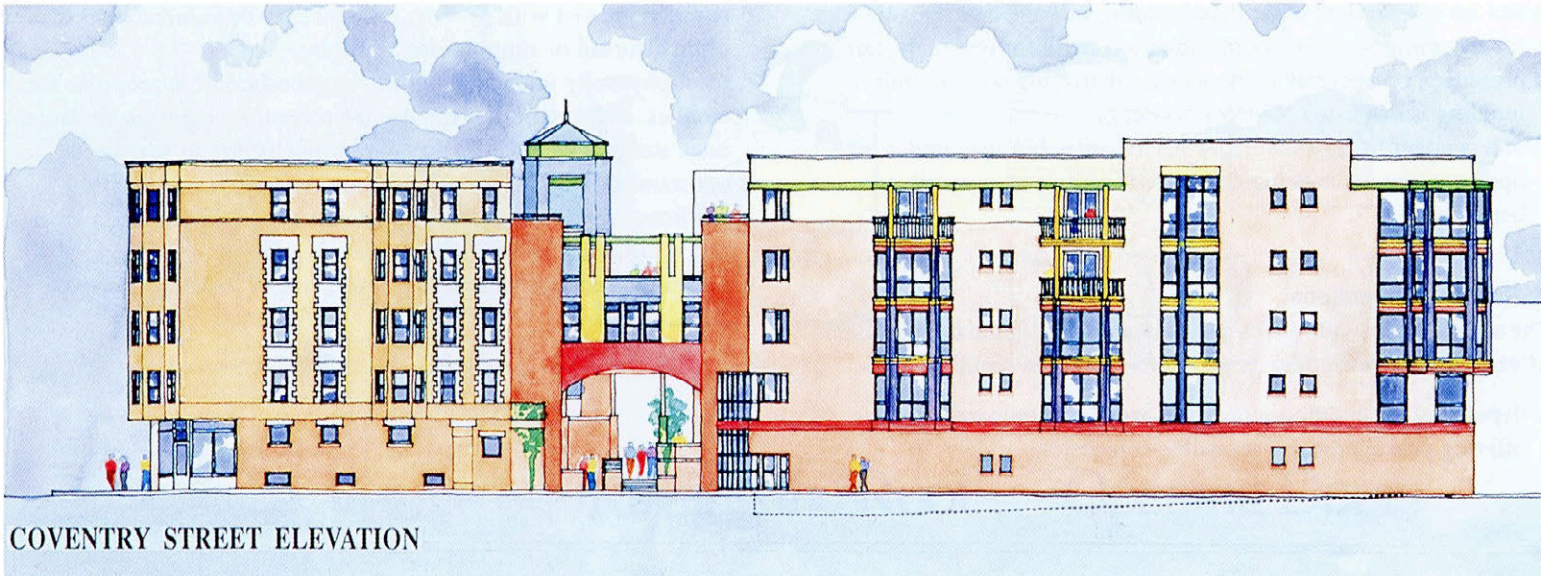
A NATIONAL DESIGN COMPETITION

Sponsored by
the City of Boston's
Public Facilities Department
and the Boston
Society of Architects

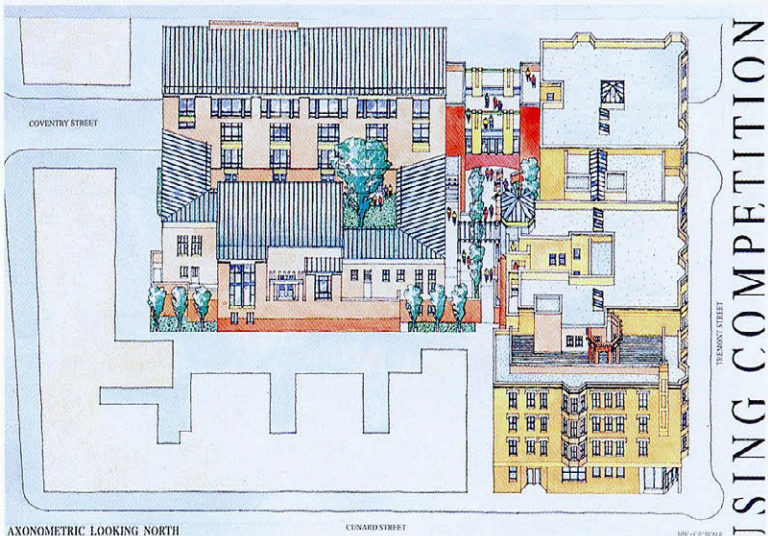
1, 2
First award entry, full
boards (Kaplan/
Nakatani: Santa
Monica, CA)

3
Sketch of typical
apartment: note items
concerning support for
independent living,
environmental control,
and accommodations
for overnight
guests/caregivers
(Kaplan/ Nakatani)

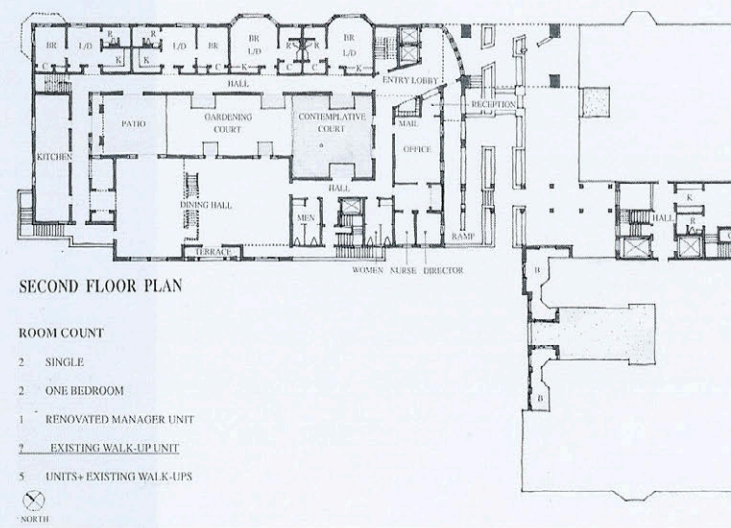




4



5



6

4
Exterior elevation: residences for PWAs must say "I care". For community acceptance as well as for the dignity of the residents, a building must fit positively within the neighborhood fabric as an attractively and residentially scaled building (Kaplan/ Nakatani)

5
Axonometric of project exterior: existing building (right), new addition (left) (Kaplan/ Nakatani)

6
Floor plan: note the relationship between indoor and outdoor common spaces, between private apartments and staffed program space (Kaplan/ Nakatani)